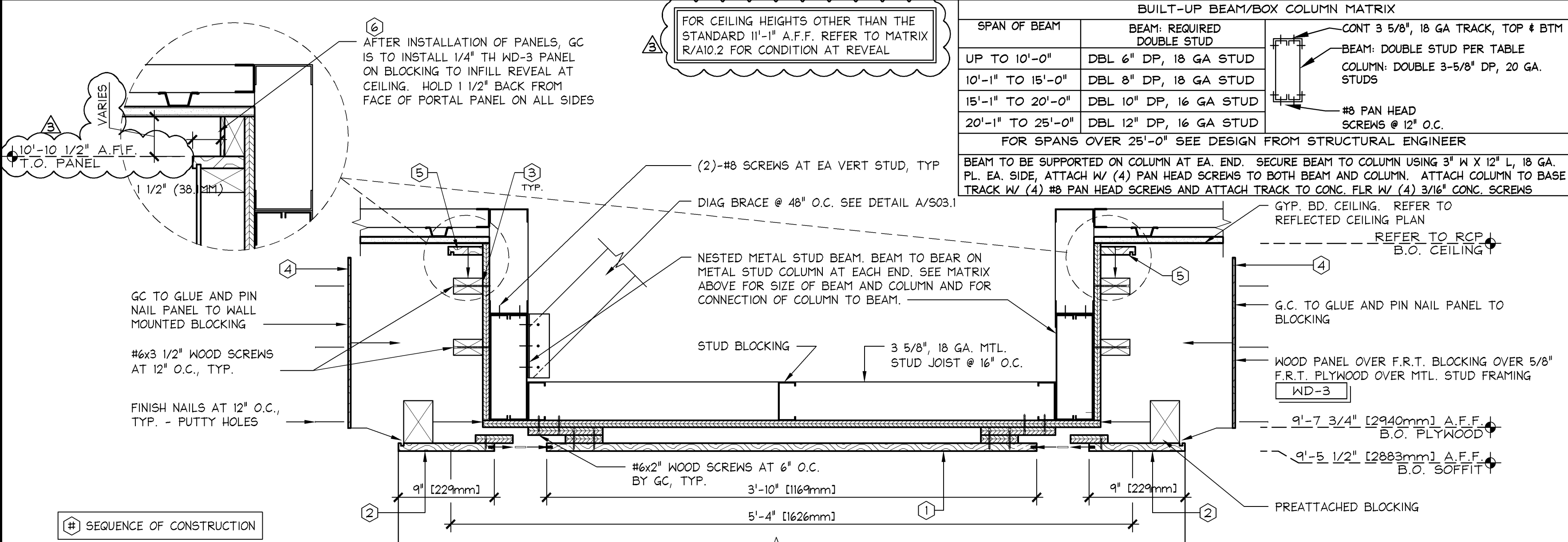


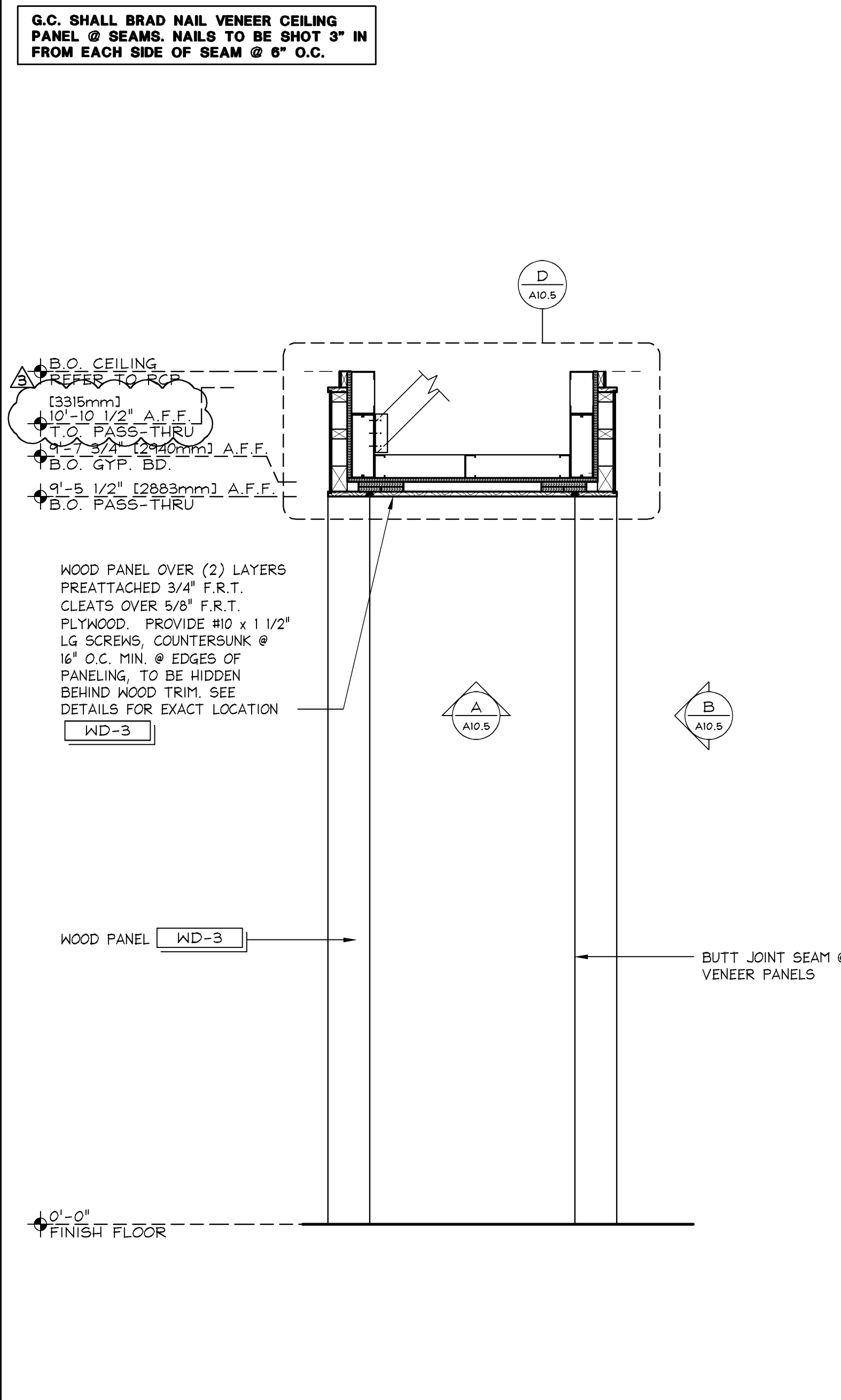
DEMO SINK SECTION AT NICHE

3" = 1'-0"  
42D-A104-M00-DETL  
M  
01.27.12



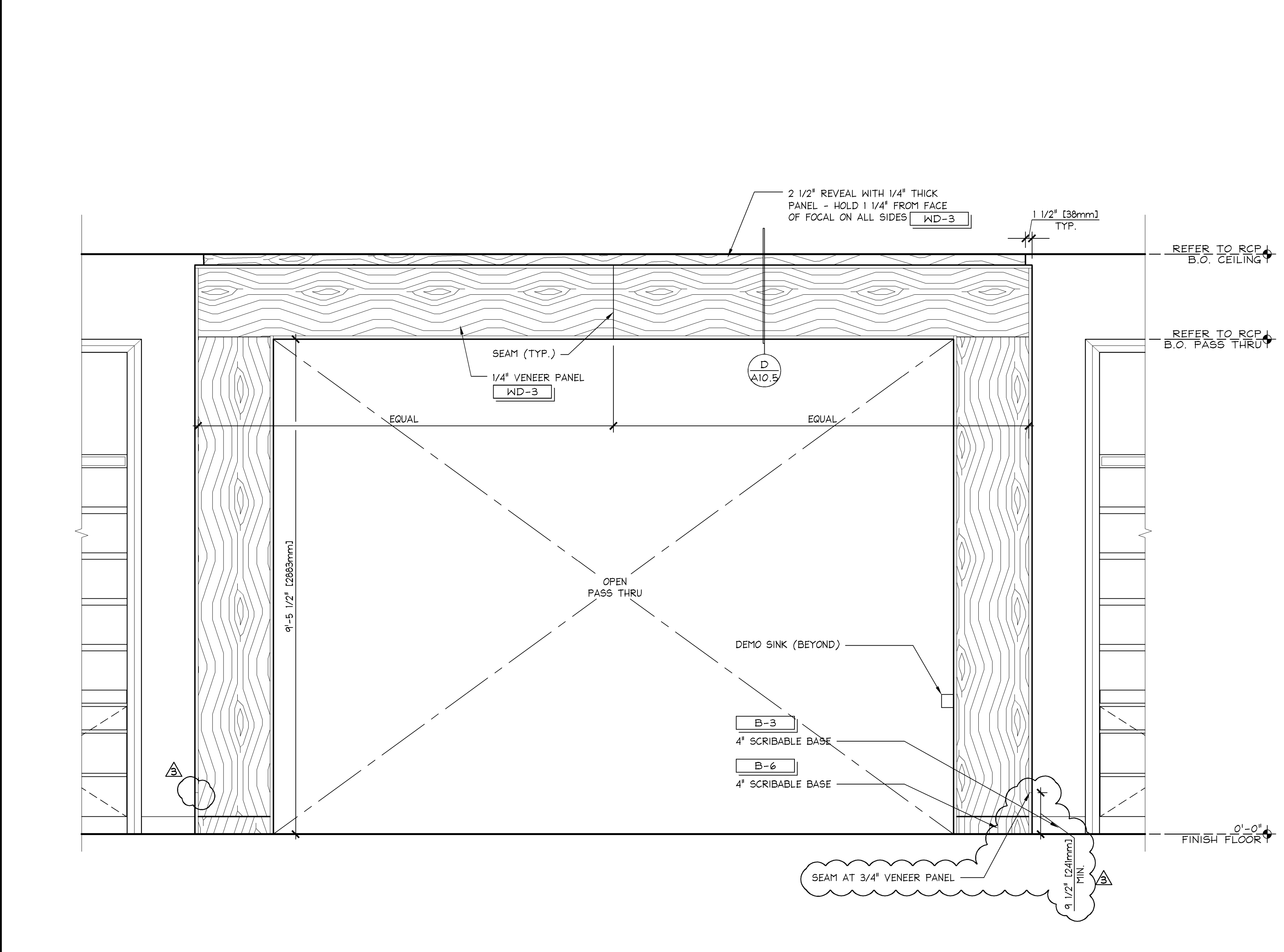
SOFFIT AT PASS-THRU PORTAL

1 1/2" = 1'-0"  
42S-A105-D00-SECT  
D  
06.08.2012



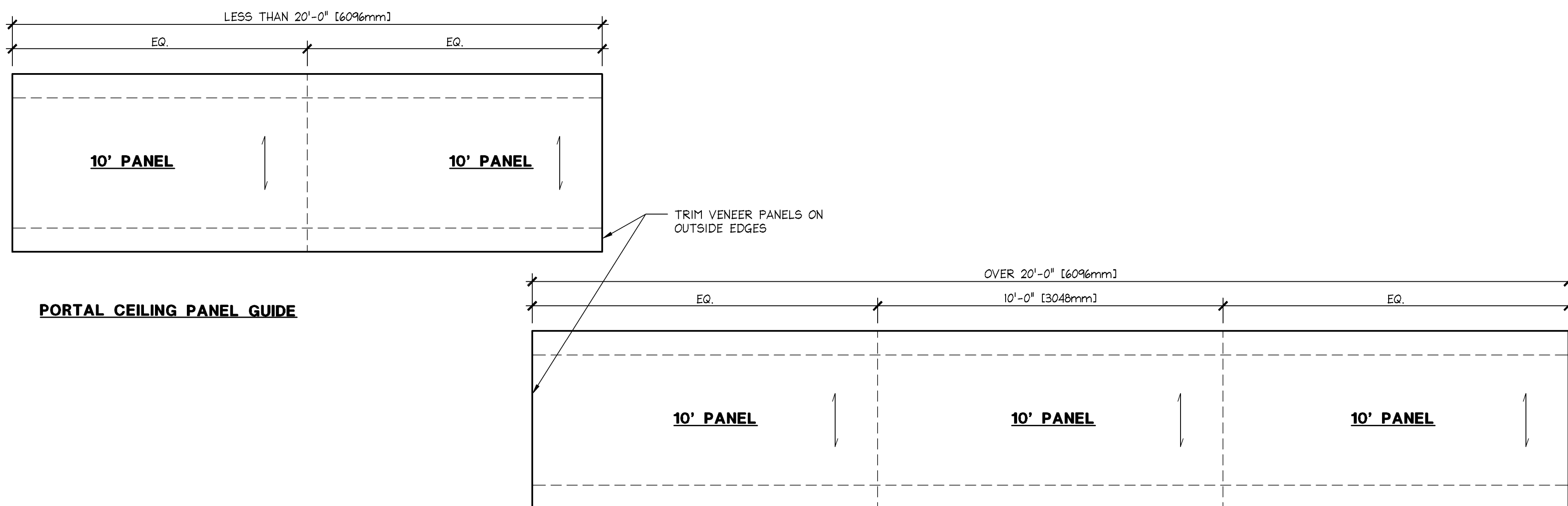
ELEVATION @ ARCHITECTURAL PASS-THRU

3/4" = 1'-0"  
42E-A105-K02-ELEV  
K  
06.08.2012



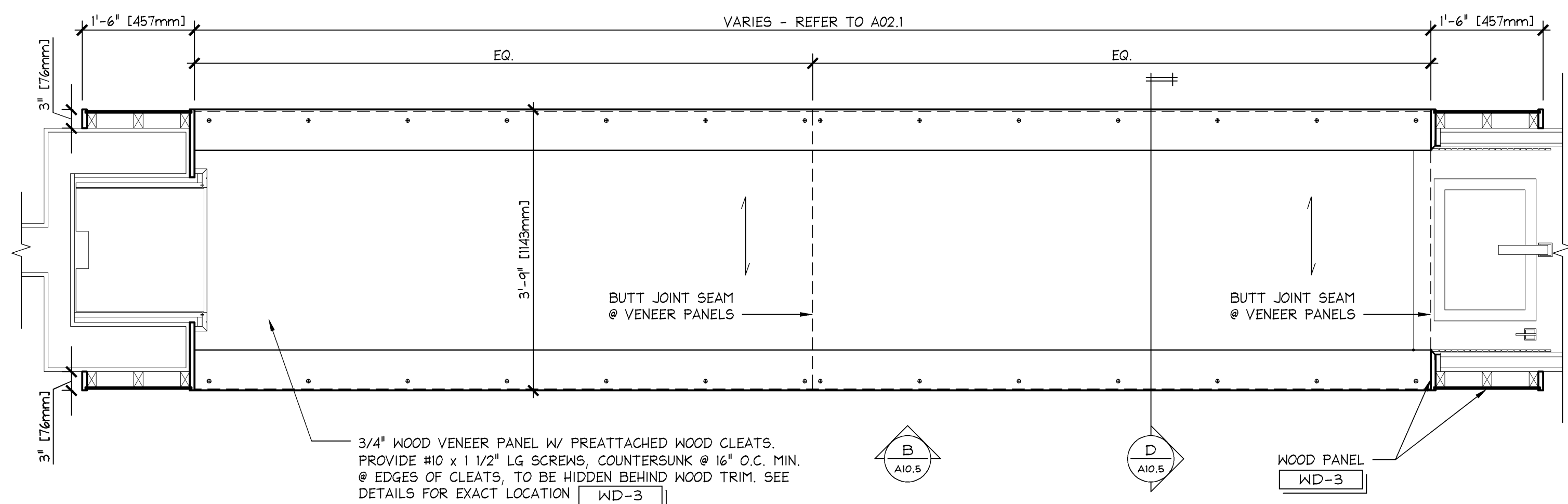
ELEVATION @ ARCHITECTURAL PORTAL

3/4" = 1'-0"  
42E-A105-B00-ELEV  
B  
04.13.2012



TOP SOFFIT PANEL (REFLECTED CEILING PLAN)

3/4" = 1'-0"  
42D-A105-A01-DETL  
A  
04.06.2012



**SHREMSHOCK**  
Shremshock Architects, Inc.  
6130 S. Sunbury Rd., Westerville, OH 43081  
T: 614.545.4550 | F: 614.545.4555 | shremshock.com  
Gerald S. Shremshock, Architect  
Timothy J. Shremshock, Architect

**Limited brands**  
LIMITED STORE PLANNING, INC.  
d/b/a STORE DESIGN & CONSTRUCTION  
Three Limited Parkway • Columbus, Ohio 43230  
Telephone: 614.415.7000 • Fax: 614.415.7349

**24200161**  
**BATH & BODY WORKS**  
**THE GALLERIA II**  
SPACE AND DESIGN  
5005 WESTHEIMER RD.  
HOUSTON, TX 77056

PROJECT INFORMATION:  
REVISIONS:  
REQUIRED BY: BUILDING DEPARTMENT COMMENTS: 04/11/14  
BUILDING DEPARTMENT COMMENTS: 05/07/14  
DESIGN CHANGES/ LANDLORD COMMENTS/ 06/26/14  
MASTERS UPDATES

ELITE CONSTRUCTION GROUP  
LAKE JACKSON, TX  
PHONE: 281.354.0712  
NOTE: THESE PRINTS HAVE BEEN  
REDUCED BY 50 PERCENT. SCALE  
WILL BE 50 PERCENT OF WHAT IS  
NOTED ON PLANS.

DATE ISSUED: 3/7/14  
DESIGNED BY: SB  
DRAWN BY: JLH  
CHECKED BY: RHW

**PASS-THRU  
PORTAL DETAILS**

DRAWING NUMBER:  
**A10.5**